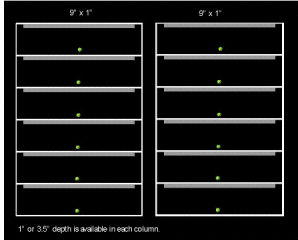




## ToolCube Drawer Column Configuration Possibilities

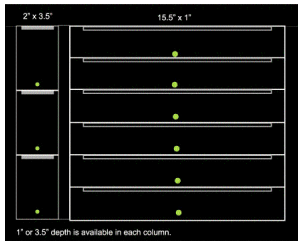
Each cube has either 2, 3, 4 or 5 drawer columns based on chosen drawer width. You can replace any two 1" tall drawers with a 3.5" tall drawer in any space. All drawers are configurable to up to 12 spaces deep at 1.5" each for a total depth of 18".



### 2 Column Configuration

The 2 column cube configuration offers the opportunity to put two of the larger 9" drawer sizes next to each other. As with all the other cube configurations you have the choice of drawer height for each column.

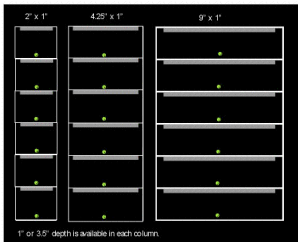
You can choose from 1" tall drawers to 3.5" tall drawers. You can replace any two 1" drawers with a 3.5" drawer.



### 2 Column Configuration

The second 2 column cube configuration offers the opportunity to put up to six of the small 2" drawer sizes next to a 15.5" drawer. As with all the other cube configurations you have the choice of drawer height for each column.

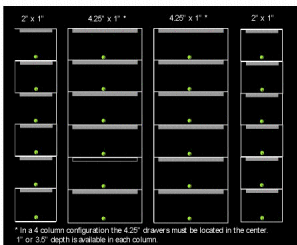
You can choose from 1" tall drawers to 3.5" tall drawers. You can replace any two 1" drawers with a 3.5" drawer.



### 3 Column Configuration

The 3 column cube configuration offers columns with all three drawer widths 2", 4.25" and 9". As with all the other cube configurations you have the choice of drawer height for each column.

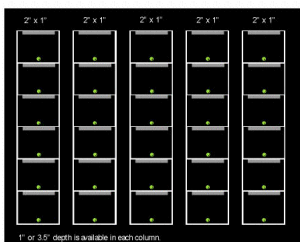
You can choose from 1" high drawers to 3.5" high drawers. You can replace any two 1" drawers with a 3.5" drawer.



### 4 Column Configuration

4.25" Wide Drawers are available in the center positions only. If you choose 1" tall drawers you can get 6 per column if you choose 3.5" tall drawers you have space for 3 per column. You then have remaining space for 2" drawers on the outside with 6 per column at 1" or 3 per column at 3.5".

The cube in the illustration to the left shows a 4 column configuration using 4.25" wide x 1" tall on the inside and 2" wide x 1" tall drawers on the outside.



### 5 Column Configuration

2" Wide Drawers are the only size available in a 5 column configuration. This allows up to 30 total drawers.

You can choose from 1" tall drawers to 3.5" tall drawers. You can replace any two 1" drawers with a 3.5" drawer.

