

Integrated Supply Management

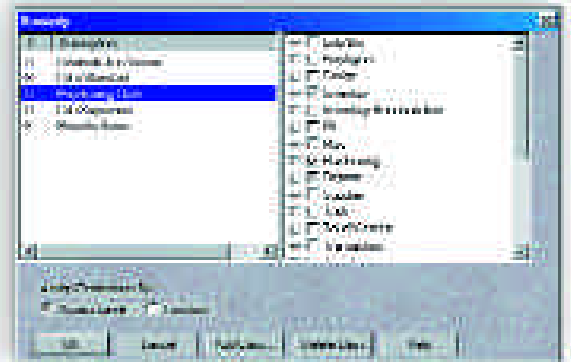
As integrated supply accounts and the number of distributors who handle these accounts grow, applications needed to run the accounts need to be increasingly robust. CribMaster was developed to help handle these integrated supply accounts. CribMaster includes all the features necessary to manage not only the customer's inventory, but consignment inventory as well. Using CribMaster to manage your integrated supply accounts will simplify your processes, provide detailed accountability to the customer and ensure cost savings by reducing inventory and identifying dead and overstocked items.

CribMaster Integrated Supply Management allows you to:

- Reduce Distributor Cost**
- Improve Ordering Processes**
- Eliminate Duplicate Data Entry & Mistakes**
- Manage Consigned or Non-Consigned Inventory and the Transition to Consigned Inventory**
- Free Up Purchasing and Receiving Agents**
- Assure Timely Purchases**
- Speed Up Issues and Returns with Bar Codes**
- Reduce Customer Cost**
- Assure the Fewest Possible Stock Outs**

CribMaster Integrated Supply features include:

- Monitoring Item Usage**
- Track Purchasing History**
- Suggestion of Order Quantity Based on Usage History**
- Ability to Provide Supplier Invoice Information**
- Consigned & Non-Consigned Inventory Management**
- Fax, EDI or E-mail Ordering and Report Distribution**
- Configurable Automatic Ordering**
- Bar Coding**
- Tier 2 Supplier Support**
- Secure Dial-in Supplier Access**
- and much more...**



Configurable Security Levels

CribMaster has built-in security so that the various features of the CribMaster program and database are secure across your network. CribMaster customizable security classification provides you:

- Comprehensive Security Infrastructure
- Use of Built-In Database Security Features
- Function-Level Password Protection
- Tool Access Security
- Risk Reduction for Incorrect Issues
- Expensive Tooling Authorization
- Configurable Tool Access by Employee, Department, Machine, Cell, Job, etc.

