

### **CribMaster Common Numbers**

"How do we number our items in CribMaster?" This has been a frequent question for our support and installation team over the years and up until recently this decision and process has always been left to the customer to answer. We have always provided guidance and assistance in data organization but there has never been a clear cut, consistent way to establish item numbers and continue to add items using rules established by a numbering system.

This became a challenge for our developers and challenges are a good thing! We rose to the challenge and CribMaster now contains a common number feature that allows facilities to address all of their tooling and supply inventory with consistent numbering and validation rules for numbering new items. In a brief summary, the CribMaster Common Item Number System allows the end user to create common item numbers and descriptions for each SKU or line item and allows the consistent layout of item numbers and descriptions based on data that has been input into the system.

#### **How the System Works**

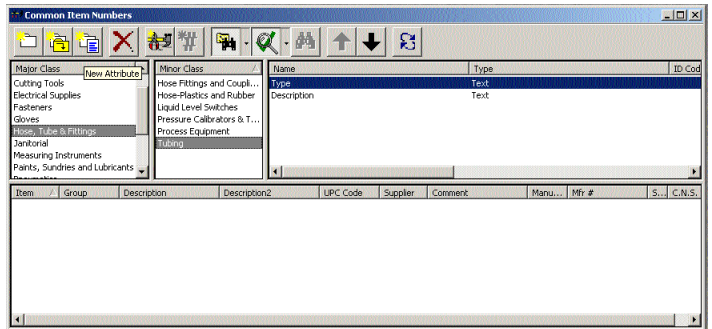
The CribMaster Common Number feature is a system based on Major Class, Minor Class and attributes to describe each tool in your inventory. Once your classes and attributes are created, you can then select these classes and attributes to describe your item. (ex. Tool > Hand Tool > ScrewDriver > 3/8" > 9" Shaft > Philips Head)

Once these attributes are selected an item number is created from your selection and a formatted description is also built. The numbers are created from parameters you select. A possible item number for the item described above could be: THT00001 and the formatted description could be THD-3/8 Philips head Screw Driver, 9"shaft. Again the number and description are created based on parameters you select.

#### **Why Would I Use Common Numbers?**

The Common Number feature will provide an end-user a number of benefits. First, by using the common item number feature, you will reduce the possibility of duplicate items in your system. Second, it will allow users to search for an item based on its attributes. Let's say a user doesn't know an item number but he knows exactly what he wants. He knows he needs a long Philips screwdriver so he can actually search CribMaster for that tool by its attributes. He enters the common item number screen, clicks search and selects Tool > Hand Tool > ScrewDriver > 3/8" > 9" Shaft > Philips Head. What a time saver!

The Common Item Number feature can be set-up in multiple ways and can range from a very loose set-up using both the regular item number and the Common Item Number or you can force the common item number to be used. The system can also be set with strict rules for numbering and attribute criteria validating every entry into the system. Overall the Common Number System will provide the end-user an easier and more effective way to identify items and tools.



#### **How Do I Switch?**

One of the nice things about the CribMaster Common Number system is that it does not require you to switch everything at once or import numerous tables of data. The first step to using the CribMaster Common Number system is creating your rules and attributes. This does not effect CribMaster's current operation in any way and can be done over any length of time. Once all of your rules and attributes are set-up in CribMaster, each item can be linked to a common number as you go. Once all of your items are linked, you can then make the decision to use the rules for setting up all new items and forcing the use of Common Numbers.