

# CM Data Warehouse

## Enterprise Tool Management



### Enterprise Tool Management

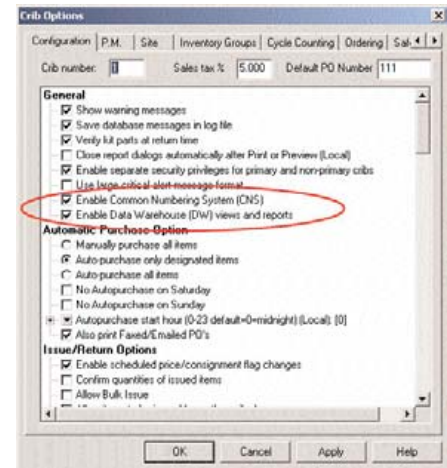
CribMaster now boasts a CM Data Warehouse option that allows companies to save millions by managing tool & MRO inventory across multiple facilities. With CM Data Warehouse, you can automatically identify excess inventory and initiate inter-site transfers instead of purchases, which reduces production expenses and establishes total control of tooling from an enterprise level.

With CM Data Warehouse you gain the ability to understand the total cost of tooling and MRO supplies. You may be paying \$4.00 for a pair of safety glasses in San Diego and \$12.00 a pair for the same glasses in Massachusetts and currently you have no way to identify these differences. By using the CribMaster Common Item Number feature along with the CM Data Warehouse, users can run reports and easily identify discrepancies in purchase price across all of their facilities. By obtaining this information combined with enterprise usage figures, organizations can more effectively negotiate contracts with suppliers. Now the entire organization can establish national and even international supply contracts with consistent pricing.

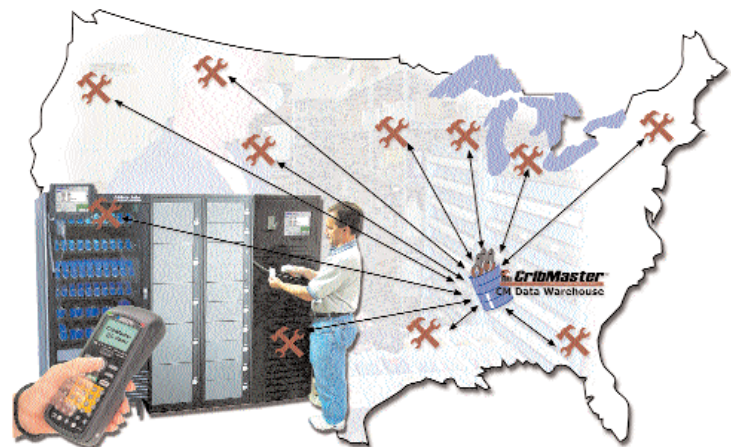
### Intersite Transfers

CribMaster's powerful new transfer capabilities become even more powerful with the addition of CM Data Warehouse. CribMaster's ability to analyze usage figures in the background enable CribMaster to keep an eye on the stock in each facility that is not being used and can be identified as dead-stock, excess inventory or surplus. You can set parameters on how CribMaster handles identifying these types of non-moving items. You can also set parameters on how CribMaster handles the purchasing or transfer of an item.

CribMaster analyzes usage and will automatically purchase when reaching minimum quantity. With CM Data Warehouse you can set CribMaster to check for surplus before generating and sending a purchase order to the primary supplier. While doing the typical automatic purchase functions, CribMaster looks across the facilities in the data warehouse to check for available surplus and initiates what is called an intersite transfer. The transfer is then approved, packed and shipped from the facility in which the item was designated surplus. What a way to eliminate dead-stock within the entire enterprise and save millions on new purchases.



C.A.S. #	Item	From Site...	From Crib-Bin	To SiteName	To Site Status	Qty Reqd.	Qty Avail.
C-100000	80 Deg. Diamond Coated Insert 2.0 Shank	TESTUN1	01-R4010	TESTUN2	Open	1	1
C-100004	90 Deg. 6" Diam. Square Shoulder Facemill	TESTUN1	01-R4003	TESTUN2	Open	20	20
C-100003	90 Deg. 5" Diam. Square Shoulder Facemill	TESTUN2	01-R4002	TESTUN1	Offline	6	6
C-100010	80 Deg. Diamond Coated Insert 2.0 Shank	TESTUN2	01-R4010	TESTUN1	Offline	5	5
C-100010	80 Deg. Diamond Coated Insert 2.0 Shank	TESTUN2	01-R4010	TESTUN1	Open	10	10
C-100004	90 Deg. 6" Diam. Square Shoulder Facemill	TESTUN2	01-R4003	TESTUN1	Open	5	5
C-100150	41-Round Stock Stone, #25 4.000	TESTUN2	01-R4063	TESTUN1	In Transit	20	20
C-100005	90 Deg. 8" Diam. Square Shoulder Facemill	TESTUN2	01-R4004	TESTUN1	Offline	4	4
C-100005	90 Deg. 8" Diam. Square Shoulder Facemill	TESTUN1	01-R4004	TESTUN3	Open	1	4
C-100126	WD-40 Oil 1 Gal Can	TESTUN3	01-100126	TESTUN1	Offline	1	1
C-12000	Test 5" 2"	TESTUN3	01-12000	TESTUN1	Open	1	1
C-12000	Test 5" 2"	TESTUN3	01-12000	TESTUN1	Open	1	1
C-100004	90 Deg. 6" Diam. Square Shoulder Facemill	TESTUN3	01-R4003	TESTUN1	Open	5	5
C-2100247	Coolant valve	TESTUN3	01-001004	TESTUN1	Open	1	1
C-100010	80 Deg. Diamond Coated Insert 2.0 Shank	TESTUN1	01-R4010	TESTUN3	Offline	17	17



Call today for more info on  
**CM Data Warehouse**  
**888.419.1399**