

## Enterprise Tool Management

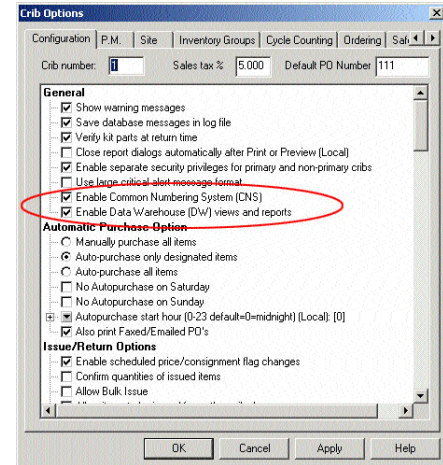
CribMaster now boasts a CM Data Warehouse option that allows companies to save millions by managing tool & MRO inventory across multiple facilities. With CM Data Warehouse, you can automatically identify excess inventory and initiate inter-site transfers instead of purchases, which reduces production expenses and establishes total control of tooling from an enterprise level.

With CM Data Warehouse you gain the ability to understand the total cost of tooling and MRO supplies. You may be paying \$4.00 for a pair of safety glasses in San Diego and \$12.00 a pair for the same glasses in Massachusetts and currently you have no way to identify these differences. By using the CribMaster Common Item Number feature along with the CM Data Warehouse, users can run reports and easily identify discrepancies in purchase price across all of their facilities. By obtaining this information combined with enterprise usage figures, organizations can more effectively negotiate contracts with suppliers. Now the entire organization can establish national and even international supply contracts with consistent pricing.

## Intersite Transfers

CribMaster's powerful new transfer capabilities become even more powerful with the addition of CM Data Warehouse. CribMaster's ability to analyze usage figures in the background enable CribMaster to keep an eye on the stock in each facility that is not being used and can be identified as dead-stock, excess inventory or surplus. You can set parameters on how CribMaster handles identifying these types of non-moving items. You can also set parameters on how CribMaster handles the purchasing or transfer of an item.

CribMaster analyzes usage and will automatically purchase when reaching minimum quantity. With CM Data Warehouse you can set CribMaster to check for surplus before generating and sending a purchase order to the primary supplier. While doing the typical automatic purchase functions, CribMaster looks across the facilities in the data warehouse to check for available surplus and initiates what is called an intersite transfer. The transfer is then approved, packed and shipped from the facility in which the item was designated surplus. What a way to eliminate dead-stock within the entire enterprise and save millions on new purchases.



C.N.S. #	Item	From Site...	From Crib-Bin	To SiteName	To Site Status	Qty Reqd.	Qty Aprd.
C-100010	80 Deg. Diamond Coated Insert 2.0 Shank	TESTUNIT1	01-R4010	TESTUNIT2	Open	1	1
C-100004	90 Deg. 6" Diam. Square Shoulder Facemill	TESTUNIT1	01-R4003	TESTUNIT2	Open	20	20
C-100003	90 Deg. 5" Diam. Square Shoulder Facemill	TESTUNIT2	01-R4002	TESTUNIT1	Offsite	5	6
C-100010	80 Deg. Diamond Coated Insert 2.0 Shank	TESTUNIT2	01-R4010	TESTUNIT1	Offsite	5	5
C-100010	80 Deg. Diamond Coated Insert 2.0 Shank	TESTUNIT2	01-R4010	TESTUNIT1	Open	10	10
C-100004	90 Deg. 6" Diam. Square Shoulder Facemill	TESTUNIT2	01-R4003	TESTUNIT1	Open	5	5
C-100150	41-Round Stok Stone 625 4.000	TESTUNIT2	01-R4063	TESTUNIT1	In Transit	20	20
C-100005	90 Deg. 8" Diam. Square Shoulder Facemill	TESTUNIT2	01-R4004	TESTUNIT1	Offsite	4	4
C-100005	90 Deg. 8" Diam. Square Shoulder Facemill	TESTUNIT1	01-R4004	TESTUNIT3	Open	1	1
C-100126	WD-40 Oil 1 Gal Can	TESTUNIT3	01-100126	TESTUNIT1	Offsite	1	1
C-12000	Test 5' 2"	TESTUNIT3	01-12000	TESTUNIT1	Open	1	1
C-12000	Test 5' 2"	TESTUNIT3	01-12000	TESTUNIT1	Open	1	1
C-100004	90 Deg. 6" Diam. Square Shoulder Facemill	TESTUNIT3	01-R4003	TESTUNIT1	Open	5	5
C-2100247	Coolant valve	TESTUNIT3	01-001004	TESTUNIT1	Open	1	1
C-100010	80 Deg. Diamond Coated Insert 2.0 Shank	TESTUNIT1	01-R4010	TESTUNIT3	Offsite	17	17

